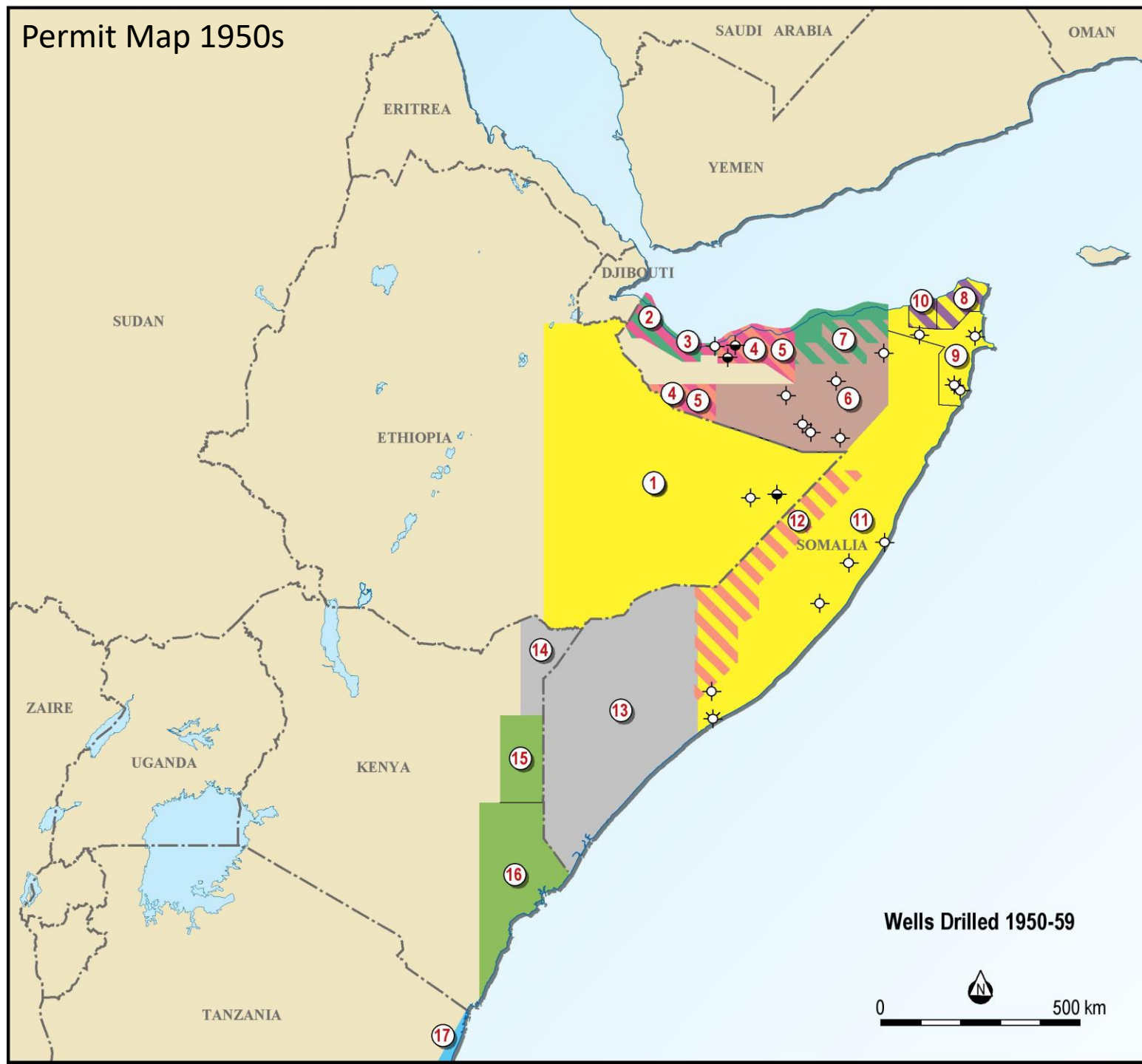
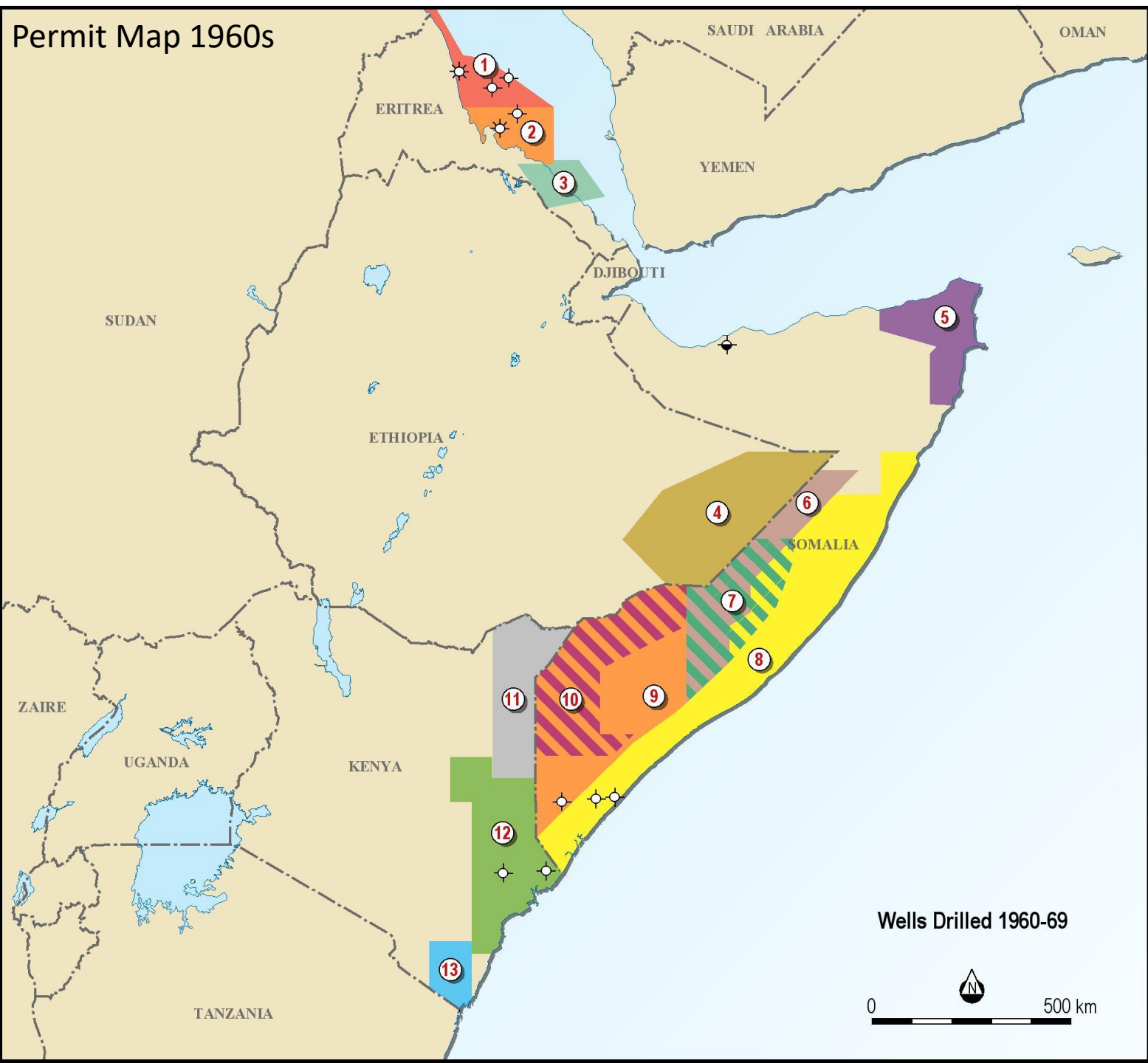


Permit Map 1950s



Ethiopia	1	Sinclair	1951-7
Somaliland	2	Moriqui	1955-6
	3	BP	1956-60
	4	Moriqui	1953-5
	5	Standard Vacuum	1955-60
	6	Conorado	1952-8
	7	BP	1959-60
Somalia	8	AGIP	1953-63
	9	Sinclair	1952-7
	10	AGIP	1959-63
	11	Sinclair	1952-68
	12	St Vacuum (Mobil)	1957-65
	13	Frobisher	1958-62
Kenya	14	Frobisher	1957-61
	15	BP/Shell	1959-68
	16	Darcy(BP)/Shell	1954-72
Tanzania	17	Shell/Darcy(BP)	1951-

Permit Map 1960s

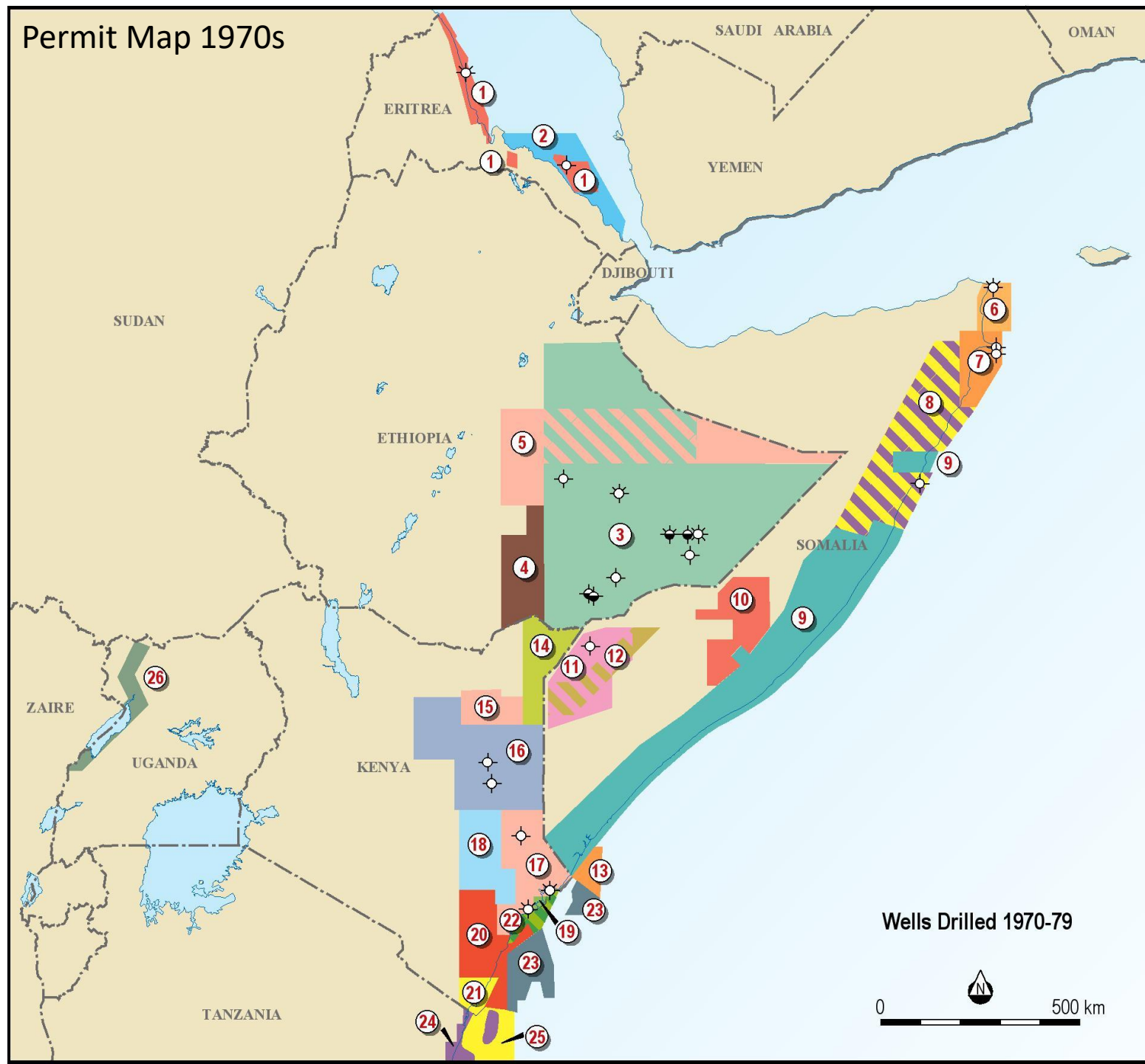


Ethiopia	1	Mobil	1963-70
	2	Gulf	1963-70
	3	Baruch Foster	1966-70
	4	Elwerath	1959-67
Somalia	5	AGIP	1953-63
	6	Mobil	1963-5
	7	Shebe Oil	1966-71
	8	Sinclair	1952-68
	9	Gulf	1962-5
	10	Hammar	1966-76
	11	Frobisher	1958-62
Kenya	12	BP/Shell	1960-72
	13	Mehta	1959-68

Wells Drilled 1960-69



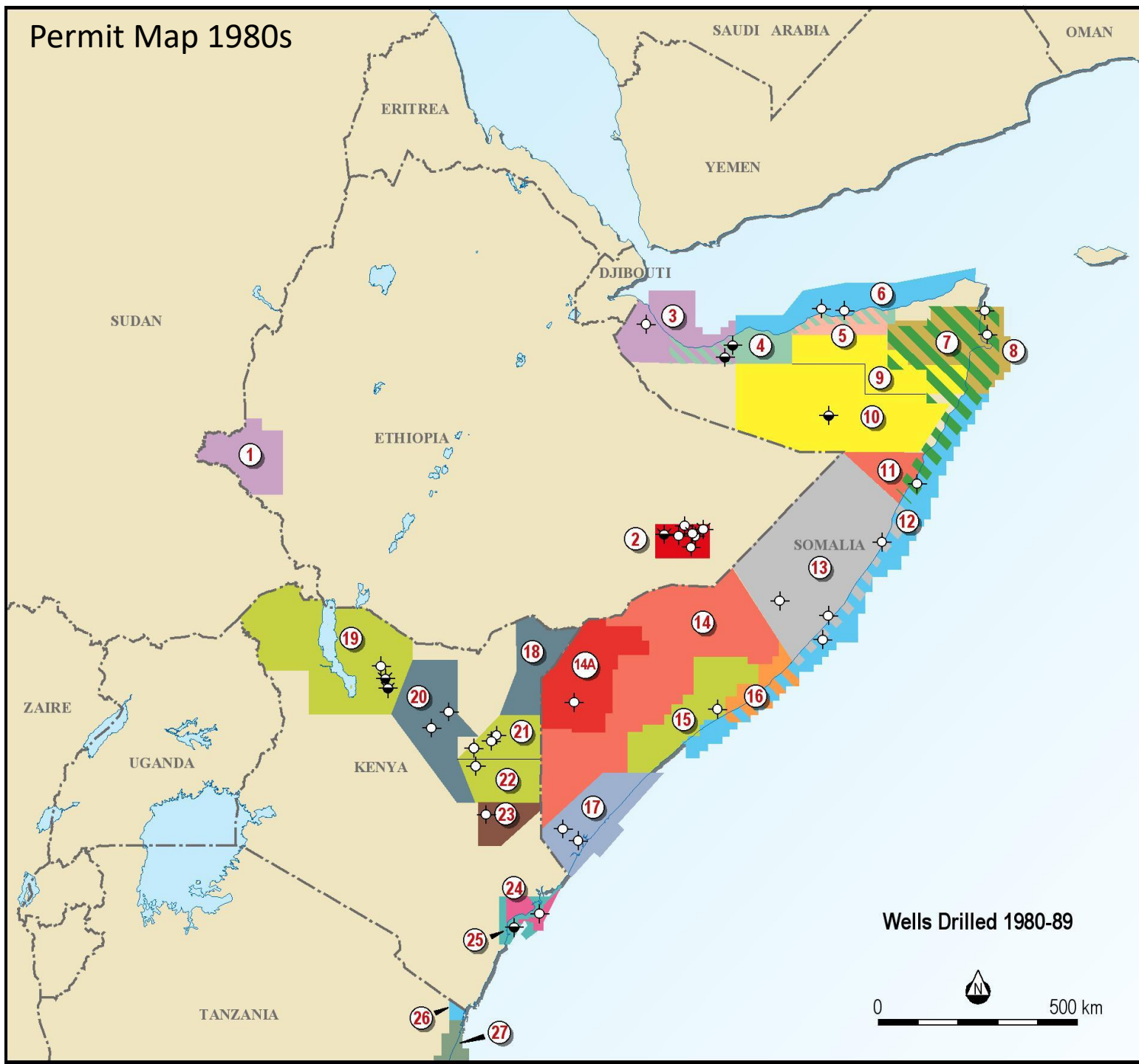
Permit Map 1970s



Ethiopia	1	Gen American	1968-79
	2	Shell	1974-7
	3	Tenneco	1969-76
	4	Voyager	1973-5
	5	Whitestone/LL&E	1973-7
Somalia	6	Elf	1971-8
	7	Elf/Exxon	1971-7
	8A	Conoco	1973-5
	8B	AGIP	1975-7
	9	Deutsche Texaco	1969-76
	10	Elf Shebel Group	1970-1
	11	Hammar	1970-6
	12	Burmah	1973-6
	13	Elf/Total	1973-8
Kenya	14	Adobe/Burmah	1970-6
	15	Whitestone	1973-6
	16	Chevron	1972-7
	17	Whitestone/TexPac	1973-7
	18	Canadian Superior	1972-7
	19	BP/Shell	1970-5
	20	Wainoco	1973-8
	21	Oceanic	1973-6
	22A	BP/Shell	1973-7
	22B	Cities Service	1977-79
Tanzania	24	AGIP	1969-77
	25	Oceanic	1975-8
Uganda	26	Comoro	1971-4



Permit Map 1980s

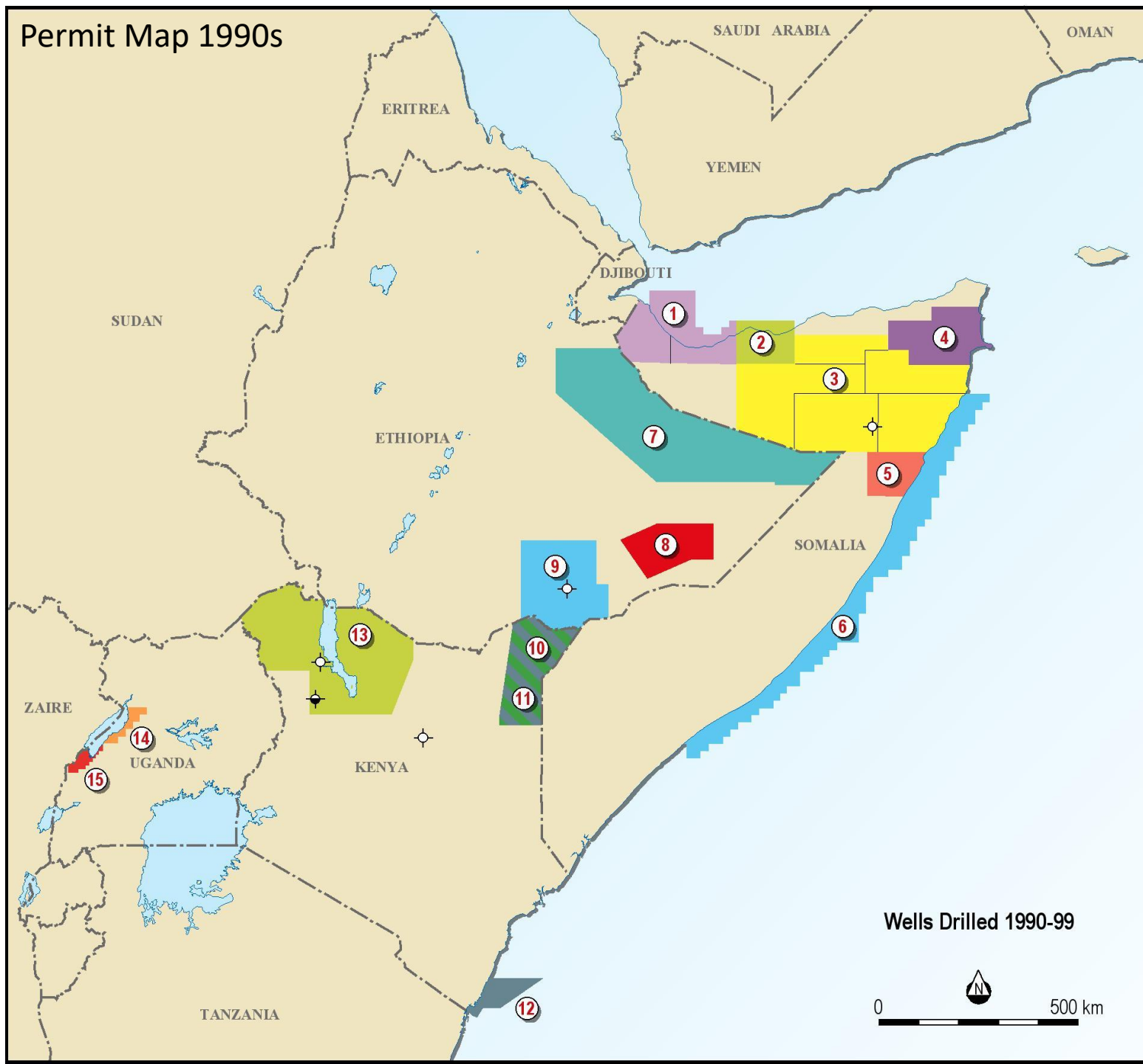


Ethiopia	1	Chevron	1982-3
	2	SPEE	1981-9
Somalia	3	Chevron	1986-92
	4	Quintana	1981-5
	5	Inpet	1986-7
	6	Shell	1981-7
	7	Cities Service	1981-6
	8	Oxy/AGIP	1986-8
	9	Conoco	1989-92
	10	Conoco	1987-92
	11	Phillips	1989-92
	12	Shell	1988-92
	13	ARCO	1979-84
	14	Esso/Shell	1984-7
	14A	Esso	1987-9
	15	Amoco	1987-92
	16	ELF	1984-6
	17	D. Texaco	1979-84
Kenya	18	Total	1989-92
	19	Amoco	1984-94
	20	Total/Marathon	1986-9
	21	Amoco/Petrofina	1985-87
	22	Amoco	1985-90
	23	Petrocanada/NOC	1986-90
	24	Union	1984-9
	25	Cities/Oxy	1979-83
Tanzania	27	Shell	
	28	IEDC	

Wells Drilled 1980-89



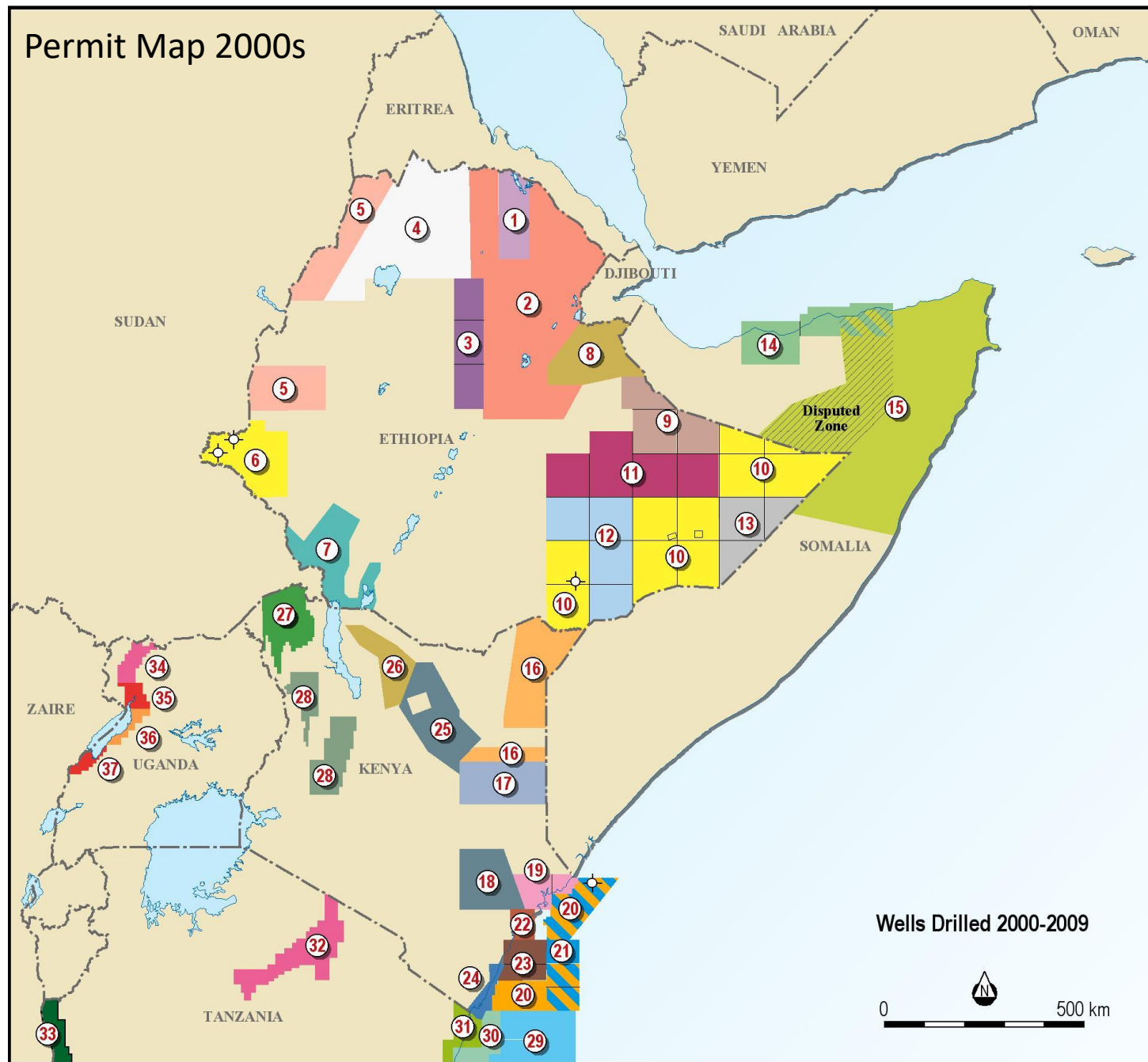
Permit Map 1990s



Ethiopia	7	Maxus	1990-3
	8	Government block	1980-92
	9	Hunt	1990-5
Somalia	1	Chevron*	1986-92*
	2	Amoco*	1987-92*
	3	Conoco*	1987-92*
	4	AGIP*	1981-7*
	5	Phillips*	1989-92*
	6	Shell*	1988-92*
Kenya	10	Total	1989-92
	11	Tornado	1997-2000
	12	Total	1984-94
	13	Amoco	1981-90
Uganda	14	Hardman	1987
	15	Heritage	1997-2003

* Permits in force majure after 1991 coup destabilized Somalia. Never re-instated.

Permit Map 2000s



Ethiopia	1	Afar Exploration	2006-
	2	Transglobal	2008-
	3	Falcon/Victoria	2008-
	4	Epsilon	2009-
	5	Calvalley	2008-
	6	Petronas	2003-9
	7	White Nile	2007-
	8	Lundin/Africa Oil	2007-
	9	Southwest	2006-
	10	Petronas	2005-
	11	Titan	2008-
	12	Lundin/Africa	2006-
	13	Pexco	2005-
Somaliland	14	Ophir	2000-
Somalia	15	Range/Africa Oil	2006-
Kenya	16	Lion	2008-
	17	Vangold	2007-
	18	CNOOC	2006-
	19	Sohi Gas	2008-
	20	Dana/Woodside	2003-8
	21	Anadarko	2009-
	22	Pancon/Gippsland	2002-
	23	Pancon/Origin	2002-
	24	East Africa Expl.	2007-
	25	CNOOC	2006-
	26	Lundin/Africa Oil	2007-
	27	CAMEC	2007-
	28	Platform	2008-
Tanzania	29	Shell	
	30	Antrim	
	31	Petrodel	
	32	Tower	
	33	Tullow	
Uganda	34	Tower/Global	
	35	Heritage/Tullow	
	36	Hardman/Tullow	
	37	Heritage	